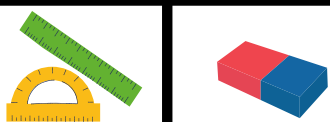


Vágd ki a táblát!



**Vágd ki a kártyákat,
nézd meg jól a táblát és
csipeszelj!**

Mi van a
tolltartó
alatt?



Mi van a
zsírkréta
bal oldalán?



Mi van az olló
jobb oldalán?



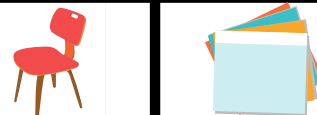
Mi van a
jobb alsó
sarokban?



Mi van a
bal felső
sarokban?



Mi van a
tűzőgép fölött?



Mi van a
jobb felső
sarokban?



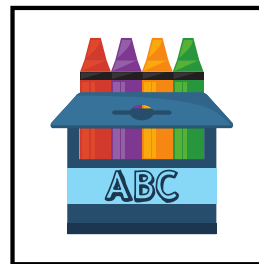
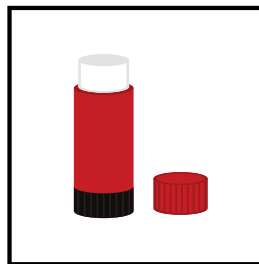
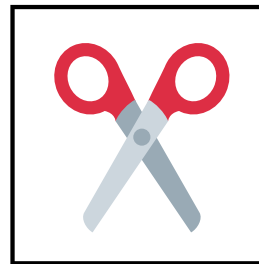
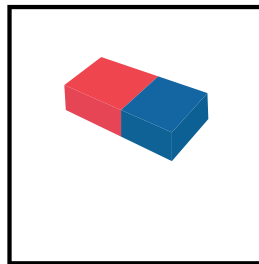
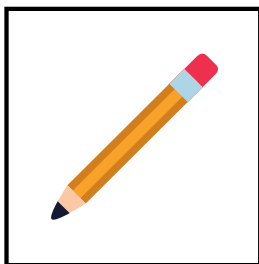
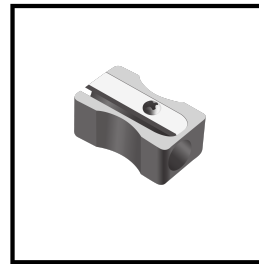
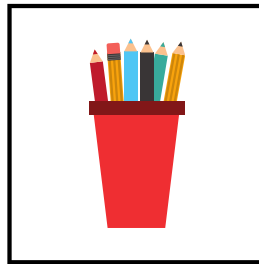
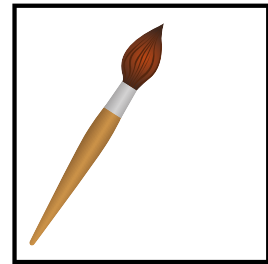
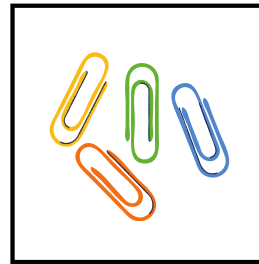
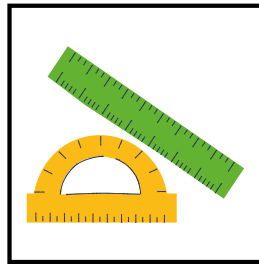
Mi van a
bal alsó
sarokban?



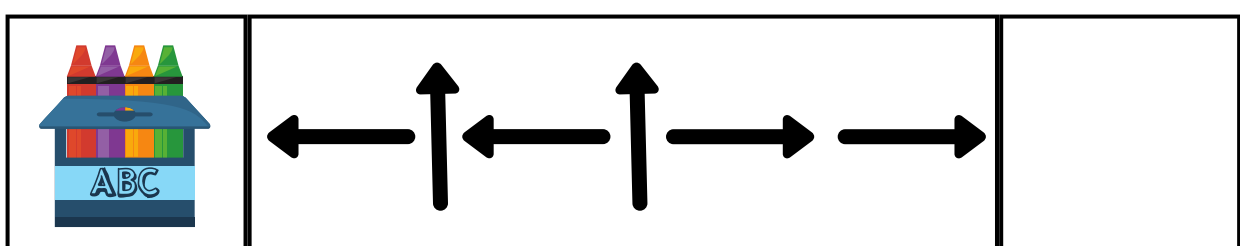
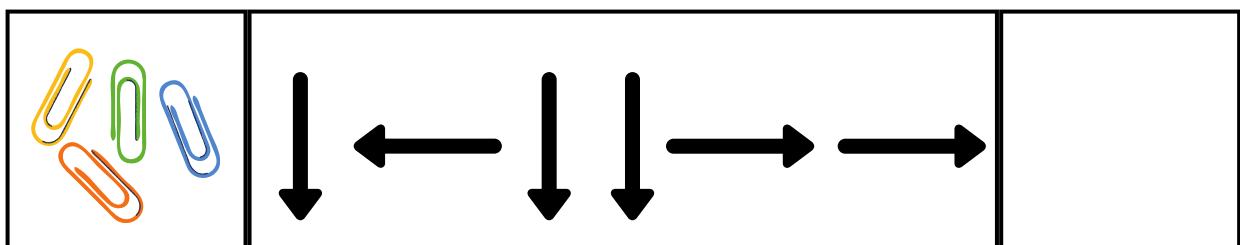
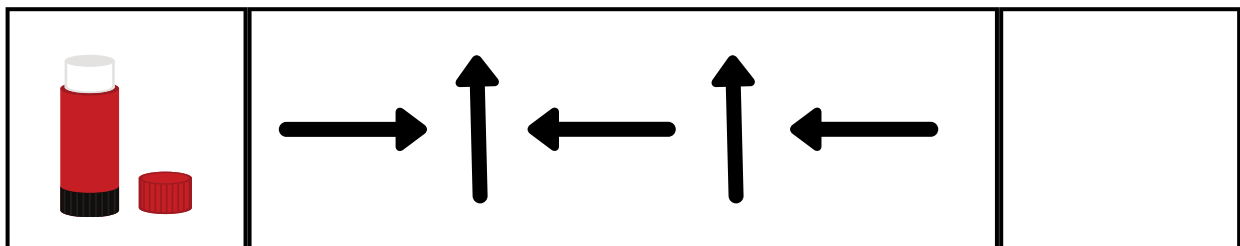
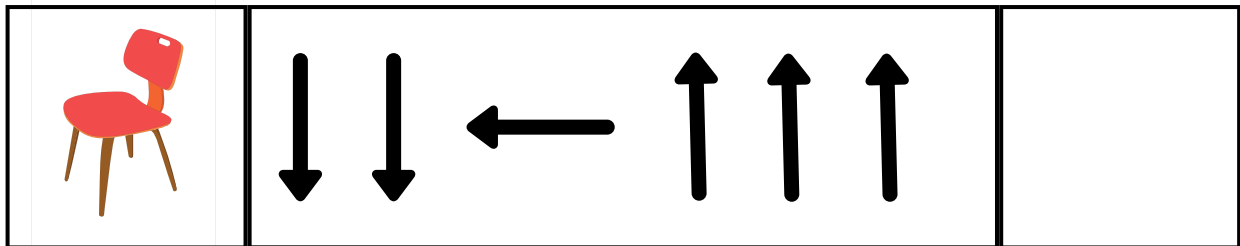
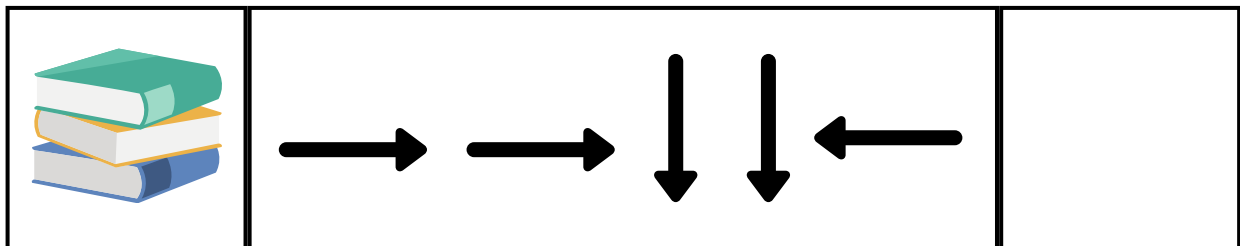
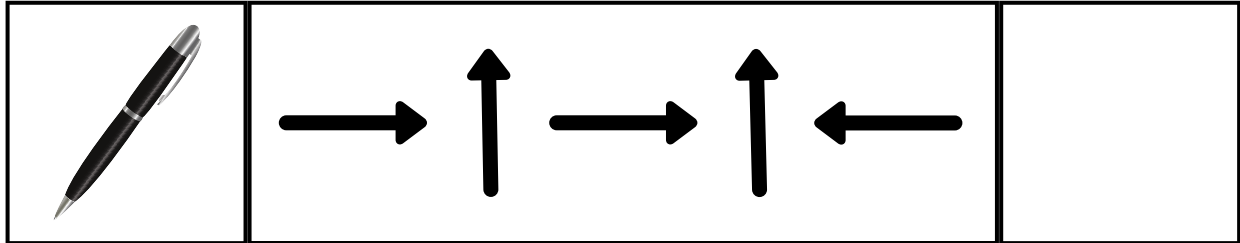
Mi van az
iskolatáska
alatt?



**Vágd ki az ábrákat,
majd tedd a megfelelő helyre a
nyilak alapján!**



Kövesd a nyilakat a tábla alapján!



Mi hányzik?

Nézd meg a táblát és találd ki!

